

PRESSURE SENSOR/ TRANSMITTER



**A T E X
M 1**
GROUP I & II
INTRINSICALLY
SAFE

**FOR USE IN
MINING**

- AIR COMPRESSORS
- AIR CONDITIONING
- AUTOMOTIVE
- CHEMICAL PROCESSING
- DATA LOGGING
- FOOD PROCESSING
- GAS FLOW
- HANDLING MACHINERY
- HYDRAULIC MACHINERY
- HYDROSTATIC LEVEL SENSING
- LOAD MEASUREMENT
- MEDICAL ENGINEERING
- PAPER PROCESSING

low cost, high performance
pressure sensor with
integral 4...20mA signal
transmitter for arduous
industrial duty.

robust

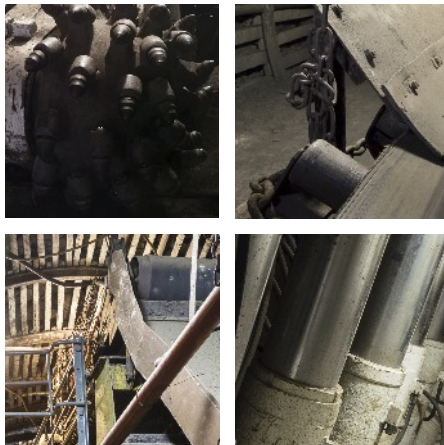
The sensor has a stainless steel housing that is chemical and corrosion resistant. The sensing capsule is completely resistant to the most severe and aggressive products and is particularly suitable where frequent cycling is required.

long term stability...

The pressure sensing element, with integral four active arm strain gauge, provides an exceptionally stable output signal with negligible zero drift and remarkable overpressure capability. 2 wire, loop powered, 4...20mA analogue output. Fully temperature compensated.

choice

Gauge or absolute. Intrinsically safe versions.





...for
use in
arduous
conditions

technical details...

	TX6114.01	TX6114.02	TX6114.03
Pressure Measuring Ranges	0.25, 0.5, 1, 2, 5, 10, 20, 50, 100, 200, 400, 600 bar		
Supply Voltage	7...14V dc	7...28V dc	7...35V dc
Output Signal	4...20mA (2 wire loop powered)		
Maximum Load Resistance	1 Kohm @28V dc		
Non-linearity, Hysteresis and Repeatability	<0.25% of span		
Compensated Temp. Range	-20°C...+80°C		
Operating Temp. Range	-40°C...+125°C		
Thermal Zero Shift	<±1.5% over -20°C...+80°C		
Thermal Span Shift	<±1.5% over -20°C...+80°C		
Safe Over Range	2 x range		
Burst Pressure	5 x range minimum		
Long Term Stability	0.1% per annum		
Connections	Polyurethane cable sealed at the point of entry. DIN Connector or Flexible conduit.		
Protection Classification	IP68 with Cable.	IP65 with Connector.	IP65 with Flexible Conduit.
Ex Certification	Ex ia I	Ex ia IIC T4	_____

electrical details...

CONNECTIONS	CABLE	CONNECTOR
+ve	RED	PIN 3
-ve	BLUE	PIN 1

order reference...

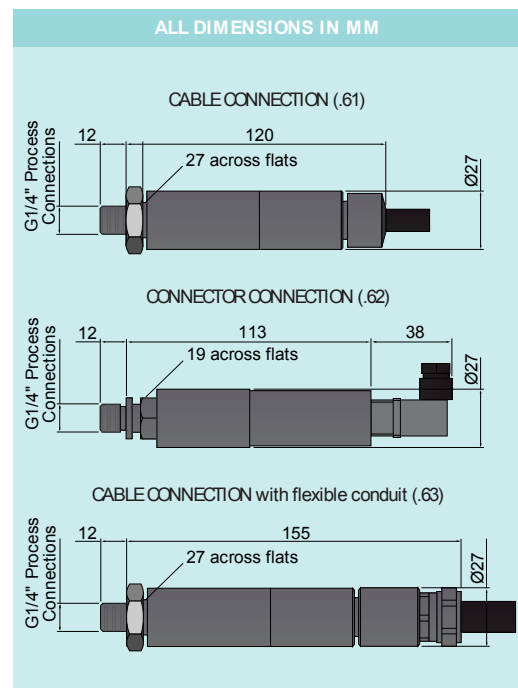
TX6114 PRESSURE SENSOR/TRANSMITTER

Please specify:

Pressure Range	(bar).
Cable length	(metres)
where applicable.	

Options

Intrinsically Safe (Group I)	(01)
Intrinsically Safe (Group II)	(02)
General Purpose	(03)
Gauge measurement	(11)
Absolute measurement	(12)
Cable version	(61)
Connector version	(62)
Cable with flexible conduit	(63)



TROLEX LIMITED

NEWBY ROAD, HAZEL GROVE, STOCKPORT,
CHESHIRE SK7 5DY, UK

+44 (0)161 483 1435

sales@trolex.com

www.trolex.com